

March/April 2026

The **Perfins** Bulletin

Volume 80, Number 2 Whole Number 717

- Annual Treasurer's report
- Unauthorized user identified
- Collect NIFREPS
- GB perfin with Brooklyn, NY Streetcar cancel
- New supplemental user of Pattern J127.5 (JPS)
- Prohibition & Revperfs
- D097 update
- Legit private use of I043.7-7A-08

The Philatelic Value of Attached Multiple Stamps - W199-17 & Friends

Steve Endicott (LM#2284) and James Sneed (LM#128)

Hidden treasures can be found while searching perfins in blocks and strips of stamps. Stephen Tauber discovered interesting documentation about the relationship of S121 to S120 while researching a group of multiple strips, which has previously been discussed.

This note documents the relationship of patterns W199-16, W17, W199-17.5 and a previously unidentified variety, used by The Western Union Telegraph Company.

W199-16 was previously seen in a pair with W199-17. As a result, W199-16 was deleted as being a die variety of W199-16. James has found a block of six, shown here, that tells us a great deal more about these two patterns. The block is of Scott #684, the 1½ cent Thomas Harding stamp issued in 1930. This block is a preper, having precancel style 61, Chicago, IL. It is shown to the right enlarged above normal size to better show the individual patterns.

The three perfins in the left column are clearly pattern W199-17; the arms in the letter W are straight. The three perfins in the right column are different and took a bit of time to determine the identifications. There are several differences; the easiest to see are the arms of the letter W, which we will focus on.

The top right pattern is W199-16; notice the pronounced curves in the arms of the W. This perfin was deleted in the 2021 edition of the *U.S. Perfins Catalog* as being a die variety of W199-17, as is documented in this block and was previously reported elsewhere.

The pattern in the middle of the right column is W199-17.5.

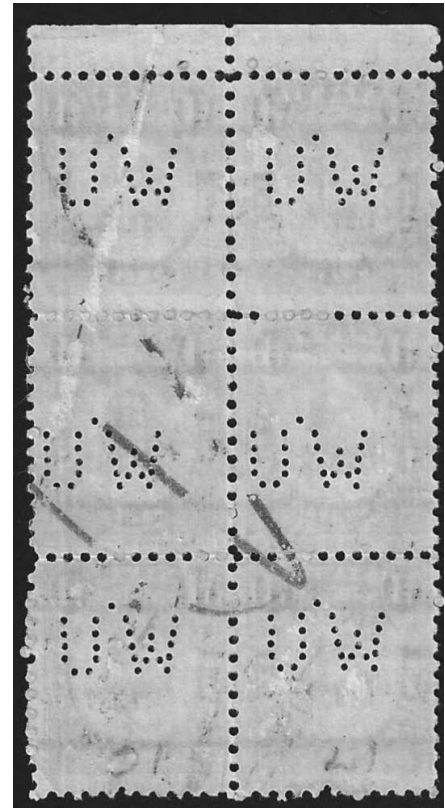
The arms of the letter W are curved, but the curve is not as pronounced as in the W199.17 above it in this block. Perfin W199.17.5 was deleted 27 years ago in the 1998 edition of the *Catalog* as being a die variety of pattern W199-17, as documented in this block and elsewhere.

We now have documented THREE different patterns in this block of six stamps!

What is the perfin in the bottom right corner? After careful consideration, we concluded that it is slightly different than the two perfins above it.

In summary, we see four different perfins in this block, with a precancel as well. Only perfin W199-17 remains in our *Catalog*. This block shows us that it was a multi-head device.

Steve strongly encourages members to carefully study perfins in blocks and strips of stamps and report variances. Philatelic treasures are out there waiting to be discovered! Multiples very often have a valuable story to tell.



**The Perfins Bulletin is the Official Journal of
The Perfins Club - Founded 1943
2025 Officers, Directors & Program Managers**

EXECUTIVE BOARD

PRESIDENT

Bob Hodges
268 Eastern Shores Dr.
Lexington, TN 38351
901-351-3270
hodges193@comcast.net
Term expires: 12/31/2026

VICE PRESIDENT

David W. Smith
P.O. Box 64
Trumansburg, NY 14886-0064
precancelsmith@aol.com
Term expires: 12/31/2027

SECRETARY

John Hart
14888 Oceanview Dr.
Brookings, OR. 97415-9326
541-951-8713
oregonhart69@gmail.com
Term expires: 12/31/2028

TREASURER

Dan Baugher
14618 Big Timber Lane
Chesterfield, MO 63017-5659
dbaugher@charter.net
Term expires: 12/31/2027

DIRECTORS-at-LARGE

Cliff P. Irving
P.O. Box 131
East Sandwich, MA 02537-0131
2hike@comcast.net
Term expires: 12/31/2026

Susan Kolze
329 E. 1st St. #311
Dayton, OH 45402-1833
sokolze@gmail.com
Term expires 12/31/2027

Joe Coulbourne
1532 Lakeview Pkwy.
Locust Grove, VA 22508-5318
josephc@aol.com
Term expires: 12/31/2028

IMMEDIATE PAST FULL-TERM OFFICER

Steve Endicott
20 Greensburgh Ln.
San Anselmo, CA 94960-1000
perfins@gmail.com
Term expires: 12/31/2026

APS Contact: Bob Hodges

ATA Contact: Steve Endicott

THE PERFINS BULLETIN EDITOR

Paul Mistretta
1800 Clairmont Lake #427
Decatur, GA 30033
678-547-9344
paulmistretta70@gmail.com

ASSISTANT BULLETIN EDITORS

Joe Chinnici -- joechin@tampabay.rr.com
Steve Endicott -- perfins@gmail.com

PROGRAM MANAGERS

PUBLISHER

Susan Kolze
329 E. 1st St. #311
Dayton, OH 45402-1833
sokolze@gmail.com

AUCTION CHAIR

Joe Coulbourne
1532 Lakeview Pkwy.
Locust Grove, VA 22508-5318
josephc427@aol.com

U.S. CATALOG CHAIR

Steve Endicott
20 Greensburgh Ln.
San Anselmo, CA 94960-1000
perfins@gmail.com

FOREIGN CATALOG CHAIR

Brian Freeman
PO Box 2222
Elk Grove, CA 95759-2222
brianj_freeman@yahoo.com

U.S. REVERF CATALOG CHAIRS

Paul Mistretta, Chmn. & Vol. 1
see: '...Bulletin Editor' at left.
Lou Caprario - Vol. 2
91 Fairview Ave.
West Orange, NJ 07052-2511
lcaprario@aol.com
Dan Baugher – Vol. 3
See "Treasurer" at left.

US RAILROAD CATALOG CHAIR

Dave Robinson
6727 Gove Ct. N
Tecumesh, MI 49286-9564
drobinson@tc3net.com
517-260-6816

CLUB LIBRARY

Contact directly:
American Philatelic Research Library
100 Match Factory Place
Bellefonte, PA 16823
814-933-3803
stamps.org/About-the-Library

PERFINS SALES MANAGER

Robert T. Combs
P.O. Box 220
Tome, NM 87060-0220
505-866-0949
stampmgr@hubwest.com

COVER SALES MANAGER

Robert Littrell
8150 Chipita Park Rd.
Cascade, CO 80809-1105
719-684-7986
Robert.littrell@comcast.net

PUBLICATION SALES MANAGER

Steve Sherman
652 Knollwood Dr.
Battle Creek, MI 49015-4610
Stevensherman652@att.net

SUNSHINE MANAGER

Karen Hebel
4106 Patterson Ave.
Oakland, CA 94619-1557
510-530-0877
karehebel@sbcglobal.net

Perfins Club membership is open to all persons interested in the collection and study of perforated initials and insignia in postage stamps. Yearly dues are \$15. Dues may be mailed to the Secretary listed above or by PayPal to perfin@charter.net. New members - partial fiscal year dues are waived. Full year dues are due by June 30 of each year. Annual dues include a subscription to *The Perfins Bulletin* mailed standard rate; or 1st Class for an additional postage charge. Applications are available at www.perfins.org or from the Secretary listed above.

Submit *Bulletin* articles, news, or advertisements to:

Paul Mistretta, 1800 Clairmont Lake #427, Decatur, GA 30033 or email to paulmistretta70@gmail.com

The Perfins Bulletin is copyrighted by The Perfins Club Cited quotations are encouraged.
Permission for extensive use of information in the *Bulletin* may be obtained from the editor.

Visit the Perfins Club web site at <http://www.perfins.org>
Susan Kolze (sokolze@gmail.com)

Philatelic Fun - Research into a Probable Unauthorized Usage

James E. Sneed (LM#128)

This cover seems very common at first glance, as it has two copies (one not fully punched) of G172 (the F rated perfin of the Guaranty Trust Co, of New York) on Scott number 498 and 499 stamps, both of which are nearly ubiquitous. However, the addressee, a serviceman in the WWI United States Air service, stationed in England piqued my interest.



A guesstimate of 1895 for James R. Carss's birthday, gave a great match in Ancestry.Com.

James Roe Carss was born on December 26, 1895, in New York, He had a successful career in the printing industry.

The back of the envelope yielded an address and initials of the sender which was "L.M.K, 1729-433rd St, Brooklyn, N.Y."

The L.M.K. return address matches Lillian Maude Karling who was born on August 19, 1897, in New York. She was employed as a secretary at Guaranty Trust Co.

She and James Roe Cars were married on June 1, 1921, in New York City, Further confirming the identity of the sender of the letter. They had two children during their marriage.

She died on December 24, 1977, in Lynbrook, New York, at the age of 80; he died on September 5, 1978, in Lynbrook, New York, at the age of 82.

The, probably unauthorized, use of the Guaranty Trust Co.'s perfins is readily explained based on Miss Karling's employment, teller for a branch of Guaranty Bank, at the time the letter was mailed.



Lilian Maude Karling,
undated photo from
Ancestry.com

Regrettably, the cover has no contents, which would be fascinating to see, but a conjoined summary of their lives from Ancestry.Com, indicates they enjoyed a long and happy life together.

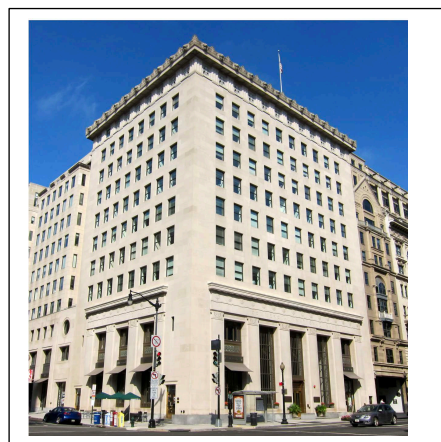
Ed. Note: I found this note particularly compelling since it clearly demonstrates that a philatelic item doesn't have to be expensive to be interesting. Even inexpensive items can pique curiosity and spark a pleasant (or sometimes, a frustrating) investigation into the provenance of the item. This note clearly proves that philatelic fun can be had with virtually no money changing hands. Always remember - the reason we collect is to have fun!

Two Probable U.S. Catalog corrections

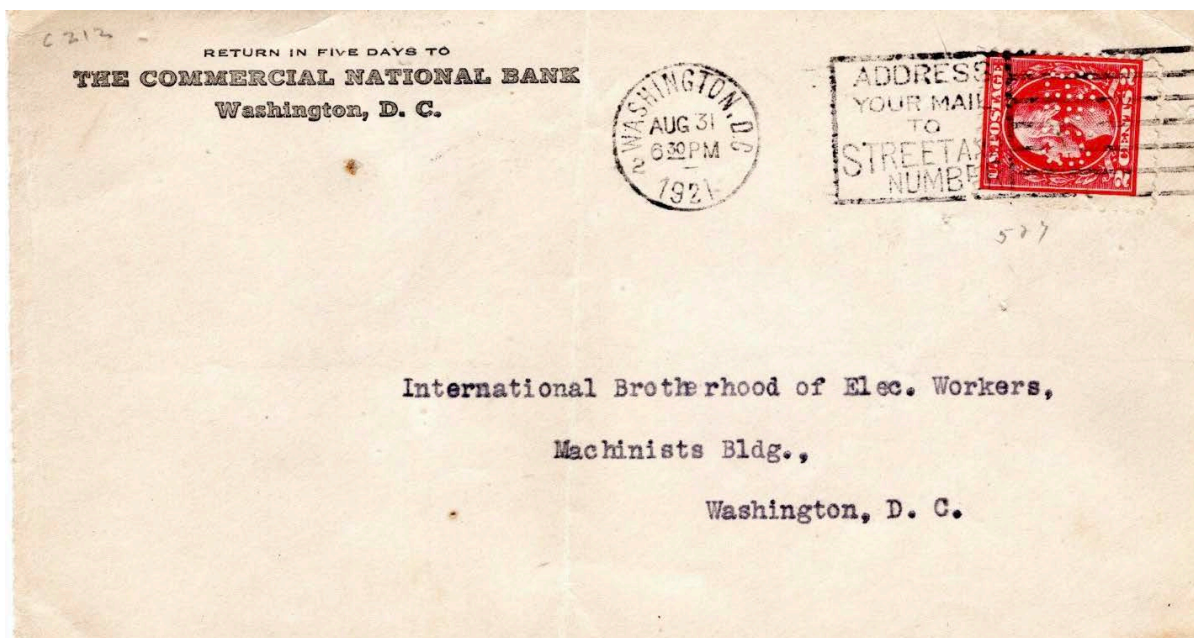
Dan Baugher (#3825) and Steve Endicott (LM#2284)

The first, perfin, N048.5i [N.C.H.], was reported, years ago, to have been seen with a postmark of 8/18/1888. Steve has not been able to locate documentation confirming this postmark. Please let Steve know if you have such documentation. Absent that, the postmark will be removed from the *U.S. Perfin Catalog*.

In a separate second matter – involving perfin C212 [CNB], The Commercial National Bank was organized in 1904 and grew to become the fourth largest bank in Washington DC by the 1920s. Its capital was frozen at the value of its building when it failed in 1933. The building is recorded in the National Register of Historic Places as part of the Commercial National Bank in Washington DC. I have not found any documentation that this perfin C212 was ever used by the Chase National Bank, as currently recorded in the *U.S. Perfins Catalog*.



The cover shown here, courtesy of Dan Baugher, shows the primary user to be The Commercial National Bank in Washington DC. Please showing Chase National Bank using this perfin. If nothing is reported, then Steve will change the primary name to The Commercial National Bank.



Update on D097 and Its Origins

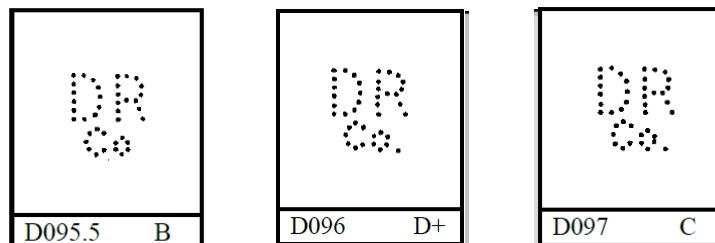
Dan Baugher (#3825)

This all started with acquiring a cover (see below) acquired at last summer's Convention.



The label on the cover slip says that the perfin is pattern D97 of the Diamond Rubber Company, San Francisco, CA. I am not sure of that notation because the perfin does not have a period after the “Co”.

Below is summarized an article from 1985 about a missing pin variety of D97...



It gets a little confusing; BF Goodrich bought Diamond Rubber company, but it seems like they kept using the DR/Co. perforator. Also, it appears that a blank cover from the San Francisco office with BFG return address was sent to the BFG office in Seattle where they hand stamped the correct return address and then mailed it. I am not sure when the stamp with a perfin was put on it. Looking at the old article about this, they concluded that there was a possibility that a main office in SF was sending these out.

I think this probably is a D097. How do we capture the fact that DR was bought out by BFG in 1912, but kept using the DR perforator for a long time? Did BFG have an office in Seattle, or did they use the DR office?

Any ideas?

Legitimate Outsider Usage of an International Harvester Perfin Stamp on a Postcard

George A. Miura (3906)

Figure 1 shows a postcard from a fairgoer at the 1925 International Dairy Exposition in Indianapolis, Indiana. Helen had encountered an impressive milk separator and wrote a few lines on an event postcard provided at the International Harvester exhibit before heading to the calf event area. Through her participation, the postcard was mailed with a Harvester perfin (1043.7A-08) perfined stamp. An innocuous comment she wrote gave rare context to the mix of personal correspondence and a perfin stamp clearing up any ambiguity on the stamp's use on the postcard.



Figure 1. Preprinted front of the subject post card showing a crowd admiring the McCormick-Deering Ball Bearing Cream Separator. A contemporaneous photograph of the exhibit can be seen at <https://wisconsinhistory.org/Record s/Image/IM8958>.

The above is what I gathered from her message in pencil (Figure 2): “Dear John, You ought to see the big separator. If we address these cards, they mail it [sic] for us. Going to show my calf in about an hour. Helen.”

Figure 2. Back side of the postcard shown in Fig. 1 on which Helen provides the clear explanation of how this apparent personal use of perfin pattern 1043.7A-08 was actually legitimate.



International Harvester later added the stamp for mailing. This postcard was different from many others I've seen that prompted further thought about a perfin stamp's irregular presence on a used postcard. In this special case, the perfined stamp was a perk to a visitor who had scribbled a message on a company postcard about her day at the Expo.

Perfin Club Treasurer's Report for Year end 2025

Dan Baugher (#3825)

The total financial assets for the Club are \$102,698 down slightly (~1%) from December 2024. The bank started charging a service charge if the checking account balance below a certain amount. This required us to cash in a CD and put that money in the checking account to prevent a service charge. The bank did have a promotion for starting a new checking account. The Club Auction was suspended early in the year. This affected our income/expenses for the year. Hopefully this will start back sometime next year. The Club Approval Circuit was discontinued and we are in the process of returning consigner material. The Approval material that was donated to the club will be brought to the national conventions in the future to be available for sale to collectors. Club Cover sales were up significantly. Club CDs had increased due to better rates.

We have four reserve categories: life memberships, escrow for member's personal credit accounts, self-insurance transit fund, and donations reserved for special projects. After subtracting for these, the Club has a remaining operational balance of \$33,003, which would cover about 2 to 3 year's expenses.

Income		Expenses	
Dues	\$3,249	Bulletin - printing & mailing	-\$8,716
Club Circuit Approval	\$0	Club Circuit Approval	\$0
Club Auction	\$2,197	Club Auction	-\$824
Club Catalog	\$839	Club Catalog	\$0
Club Cover	\$4,021	Club Cover	-\$3,224
Interest (BofA and CDs)	\$3,437	Sunshine/Library/Historian	\$0
Club Transit Insurance	\$0	Officers	-\$824
Donations	\$829	Conventions/Promo and web site	-\$1,874
Other Income	\$750	Paypal Expenses	\$55
		Club Insurance and Claims	-\$639
Total Income	\$15,322	Total Expenses	-\$16,047
Assets		Liabilities and Reserves	
Checking Account	\$27,357	Liabilities	\$0
CD's	\$70,339	Reserves	
Approval Account	\$5,002	Life Memberships	\$27,593
Paypal Account	\$0	Donations - general	\$35,161
		Floyd Walker Memorial Fund	\$1,215
Total Assets	\$102,697	Escrows for members	\$854
		Self Insurance - Transit	\$4,872
		Operating Fund	\$32,000
		Total Liabilities and Reserves	\$101,695

Members are entitled to one free ad per year on a space-available basis. Additional ads will be accepted at the following rates: one insertion at 10¢ per word (do not count membership number and heading); three consecutive insertions of the same ad at 20¢ per word; six insertions of the same ad at 40¢ per word. Paid ads relating to perfins are accepted from non-members. Non-member rates are 15¢ per word for a single insertion, 30¢ per word for three consecutive insertions, and 60¢ per word for six consecutive insertions of the same ad. Neither the Perfins Club nor the editor accepts responsibility for the validity of the advertisements. Payment for the ads should be made payable to 'The Perfins Club' and sent to the editor with the request for insertion.

Perforator of Pattern S343 Finds a New Home

Edited from an email from Maciej Pilecki (#3762) via Joe Coulbourne (#2574)

Perforator for pattern S&F (S343) for sale on eBay!

I noticed this beauty while browsing eBay: <https://www.ebay.com/itm/136545806505>. At \$200 plus another \$120 in shipping cost to Europe, it is way too expensive for me, but perhaps one of our US members would like to snatch it! It is a Cummins No 52 perforator, set with pattern S343 in a 5-die configuration, and the picture attached even shows the missing pins for dies 4 and 5! I think it could be a nice buy for an interested collector! Good luck! If you end up buying it, please be so kind as to send me (and the catalogue editor) the proof of all five dies!

The perforator was listed in an eBay estate sale and was (inaccurately, but humorously) described as follows:

Antique 1890s B. F. Cummins Initial Perforating Cast Iron Leather Punch Machine.
US \$199.99.

Shipping: US \$57.40 USPS Ground Advantage®.
Located in: Odessa, Missouri, United States.

Despite the obvious misidentification of the perforator as a "...leather punch machine..." the perforator has sold. Sale price was not included in the eBay announcement of sale, so my unconfirmed assumption is that it sold for the asking price

The sale announcement included 8 photos of the perforator, of which 4 are shown below.



This is a very nice example of a Cummins No. 52, even with the broken pins (left 2 patterns). Congratulations to its new owner!!

What is a NIFREP?

Steve Endicott (#LM2214)

The Perfins Club has done extensive research about perfins as they are found in postage and revenue stamps. Perhaps we should also be studying the little round pieces of paper that come out of the holes when perfins are made from a perforator, the "nifrep"s. By the way, "NIFREP" is perfin spelled backwards. It pronounced nee-frep.

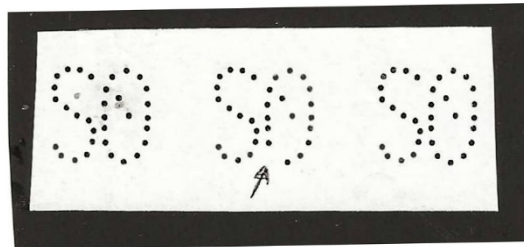
In 1972, Dr. Howard Webster from Portales, NM wrote an excellent article about FREPs (perf spelled backwards). His article available (as a relatively poor photocopy) at the American Philatelic Research Library (APRL), focused on FREPs from the perforations in stamps. As he astutely observed, "Why should anyone get interested in holes with nothing inside? Now the bits of paper that come out of the holes ... that is something that does exist." Dr. Webster exhibited his work at SouthWestPex in the Fall of 1972.

This article extends his work into the field of nifreps.

The collector of nifrep is initially challenged to find those little circles (who keeps the round circles coming out of the perforator?) and (harder still) to identify as well as to mount and display them.

The basic nifrep collecting format consists of gathering the nifreps and attempting to link them to a perfin pattern by studying the colors and the shapes. Remember that per postal regulations nifreps will, if legal, have a maximum diameter of 1/32 of an inch.(Meyer 1908). So... good luck!

Regarding missing nifreps: As Dr. Webster observed and as shown here, this "is one of the rarest and most difficult of all freps" [nifreps]. You don't believe us – just try to find that missing nifrep.



Author's note to the Philatelic Purist: This example was constructed from the S195-17 perforator in my possession, using a blank sheet of paper – NOT postage stamps.

If the mail room perforator operator is careless, the result may be misaligned nifreps. Dr. Webster called these cattywampus nifreps.

The double cut nifrep is the result of the operator of the perforator running stamps through the perforator more than once. This can result in strange shaped nifreps. In a double punched stamp the first punch would result in a set of complete nifreps while the second punch would generate a mix of complete nifreps and distorted nifreps having shapes consistent with the phases of the moon. These nifreps are quite difficult to find; however, once found they are usually easy to identify with the perfin, due to their strange joined nifrep shapes. In isolation they are very difficult to identify since they have even less printed paper than normal nifreps. There is a potential for an infinite variety of collectable partial nifreps



Running stamps through a perforator can also result in nifreps that are said to be “drifting” or “floating”. Perfin collectors frequently submit perfins with floating perfs to the Catalog Editors, suggesting that these floaters are control holes in a new perfin pattern. But we nifrep collectors know that they are merely nifreps.

The nifrep collector will want to distinguish nifreps by the size of their diameter, as the examples below demonstrate.



How should we collect and catalog nifreps? By color? By association with the Perfin? What should the nifreps Catalog editor do if the nifrep fits multiple pin holes in a perfin, or even more challenging – matching pin holes in multiple perfins?

I hope that this introduction to nifreps excites you to learn more and to become a serious nifrep collector. To begin, I recommend that you obtain a copy of Dr. Webster’s article about FREPS

In the April 1986 issue of the *Perfins Bulletin*, Dave Smith shared the result of his auction of "perfin holes", which we now know are nifreps. I was surprised to learn that nifreps were recognized and competitively sought after, even 40 years ago. Five collectors gathered nifreps at the Fall 1985 Precancel/Perfins Annual meeting, from which Dave ran his auction #34. Lot #2160 was described as “Envelope of 2,000+ perfin holes”. Seeing competitive bidding, Dave submitted a request for 15,000 additional nifreps. This is the largest accumulation of nifreps ever assembled.

Ten collectors bid on Lot #2160. According to standard auction rules, the lot sold for 10% over the second highest bid, which was \$71.50, amounting to a value of three cents per nifrep. Dave awarded 2,000+ nifreps to each bidder at the price of \$0.00.

He wrote a note to each successful bidder, part of which follows:

- “This lot of selected perfin holes was submitted for auction by a collector of everything philatelic.
- “This lot should meet the needs of any collector, from the beginner to the most advanced. With it, one can fill even the toughest holes in his collection. By rearranging the holes, one can change the composition of his collection at any time to meet the whims of the moment, or the demands of an exhibit.
- “Some problems may occur with mounting. While suitable hinges are readily available in Lilliput, they are difficult to obtain elsewhere.
- “ ... As this lot is a limited edition collector’s item, the value of this packet can only increase. For those who invested, that’s the hole story.”

Dave went on to identify the Cummins #52 Postage Stamp Perforator used to create the nifreps. It was the perforator used to produce Standard Oil’s perfin S195-17; a five-die perforator, with a missing nifrep in one of the dies, as shown near the beginning of this article.

If you haven’t figured it out already Happy (and early) April Fools Day !!

References:

Meyer, G. V. L. 1908. Order of the Postmaster General. Order No. 1342. Washington DC: U.S. Post Office Dept. 1 p.

Smith, David. 1986. Perfin Holes Bring Record Prices. *The Perfins Bulletin* 39:78.

Swift, Jonathon. 1826. *Gulliver Travels*. Accessed at:

https://www.google.com/books/edition/Gulliver_s_Travels/QHRFskXOoocC?hl=en&gbpv=1&dq=gulliver%27s+travels&printsec=frontcover. Accessed on: 01 Jan 2026.

Walker, Floyd. 1973. Notes from the Editor. *The Perfins Bulletin* 26(1):4.

[Webster, Dr. Howard. 1972.] What's a FREP? Philatelic exhibit. Portales, NM: Privately Compiled. 16 p.

GB Perfin Franking a Postcard with a Brooklyn, NY Streetcar Cancel

Dan Baugher (#3825)

One of my side specialties while collecting perfins is finding covers or postcards with streetcar cancels. Streetcar RPO's (railroad Post Office) began in the 1890's and ended in the 1920's. Streetcar cancels are distinguishable by the "R.P.O." marking along with the route information in the CDS (circular date stamped) cancel. Streetcar Cancels are reported from several cities, including Baltimore, MD; Boston, MA; Brooklyn, NY; Chicago, IL; Cincinnati, OH; Cleveland, OH; New York, NY; Omaha, NE; Philadelphia, PA; Pittsburgh, PA; Portland, OR; Rochester, NY; San Francisco, CA; Seattle, WA; and Washington, DC.

The Brooklyn system, which operated from 1894 to 1914, had several different lines -- the Brooklyn and Coney Island RPO, the Brooklyn and Fulton Street RPO, the Brooklyn and Long Island City RPO, the Brooklyn and Queens County RPO, the Brooklyn Circuit RPO, the Brooklyn South Shore RPO, the second Brooklyn and Coney Island RPO, and the Brooklyn and Fort Hamilton RPO.

Price 1979

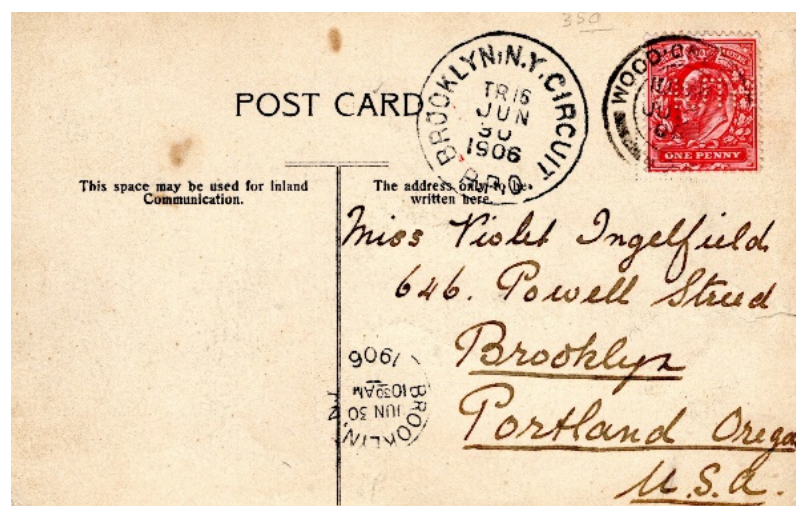
I wrote about the first streetcar cancel I found in a *Perfins Bulletin* article in 2010 (Baugher 2010). In a 2012 *Bulletin*, Gary Hendren wrote about a St Louis streetcar cancel on postcard he found (Hendren 2012). Since then, I have found cancels from Chicago and Baltimore. I thought I should be able to find a lot more examples.

Based on the information shown below, I had crossed Brooklyn off my wantlist. The reported absence of cancelled mail carried on this streetcar route after 1906, predates by 2 years legalization of US perfins. While I have subsequently seen a 1908 Brooklyn, N.Y. Circuit RPO cancel, the date of discontinuance of cancelling of the mails bears only on my original decision to cross it off my wantlist, it does not affect the subsequent discussion.

We have many cancellations recorded from this RPO. They range in dates from 8-15-96 to 10-8-06. There are several major types and a number of minor varieties which will be described later. Cancels are fairly common up until the Fall of 1906 and then suddenly stop. Apparently the clerks stopped cancellation mail at that time.

Price 1979

I was, therefore, surprised when I ran across a Brooklyn Circuit streetcar cancel - on a post card from *Great Britian* franked with a perfin.



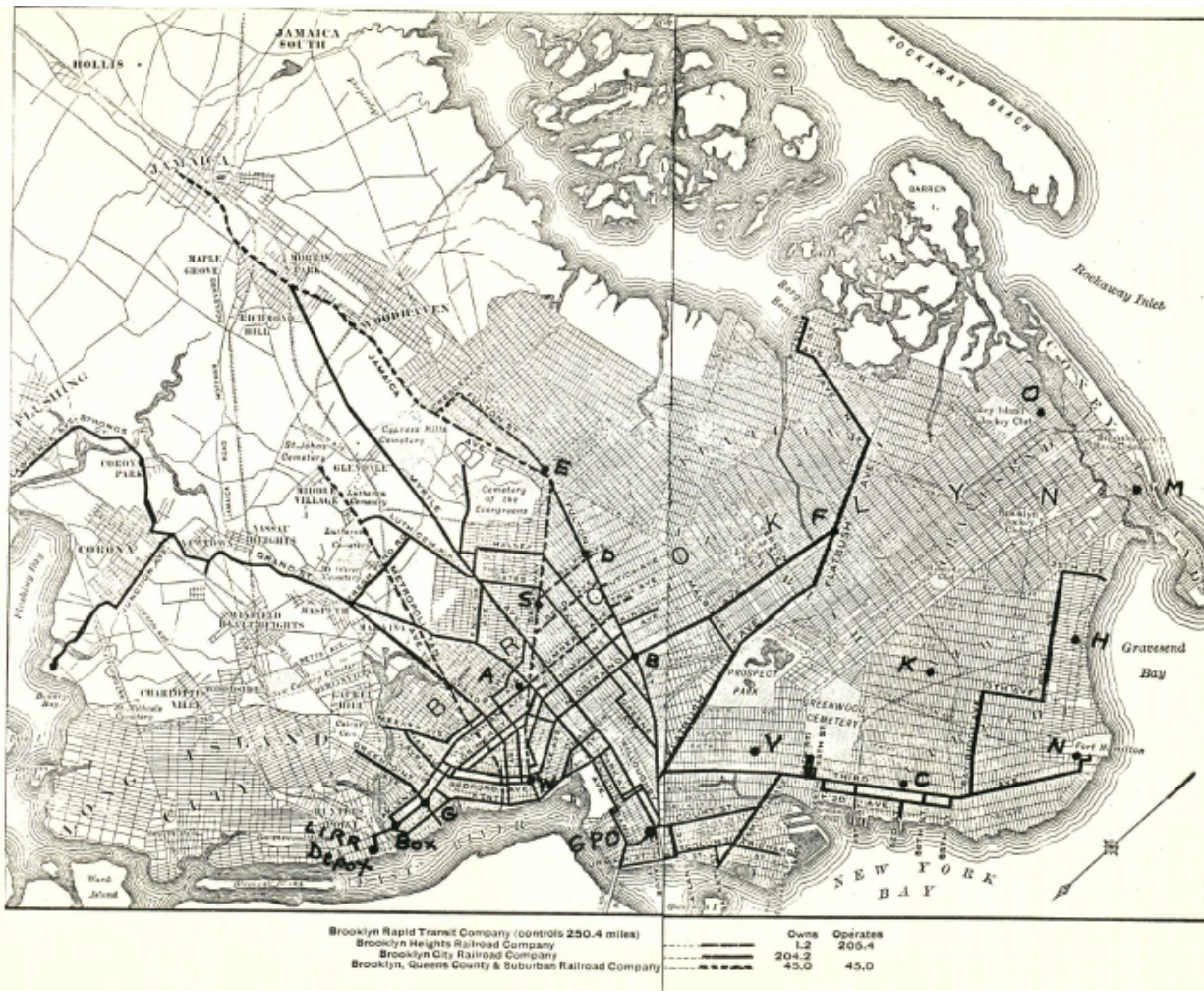
This personal postcard has a British perfin, H7490.02 (HUTH), which is attributed to Frederick Huth & Co., Merchants and Merchant Bankers, of London, EC, and, also to Huth Produce Sales Ltd., London. The postcard was mailed from London

(Wood-Cr... cancel) to Brooklyn, Portland Oregon, USA. It has a streetcar cancel of the Brooklyn, NY Circuit. I am not sure why the sender added "Portland, Oregon" to the address. Seven postmarks are listed for stamps with this perfin, none of which completely agree with the "Woods Cr..." cancel seen on this stamp (Galt 2022).

I think the streetcar cancel is a G Large Circuit number 5 as illustrated in the Brooklyn, NY streetcar cancel catalog (Price 1979). Also, from the same source, is the information that the Brooklyn, NY Circuit was discontinued in 1914, not 1906 as I previously believed.



The postcard was going to 646 Powell Street, Brooklyn, NY which appears to be on the "Brooklyn NY Circuit".



From the 1897 Brooklyn Daily Eagle Almanac. Courtesy of the Brooklyn Public Library.

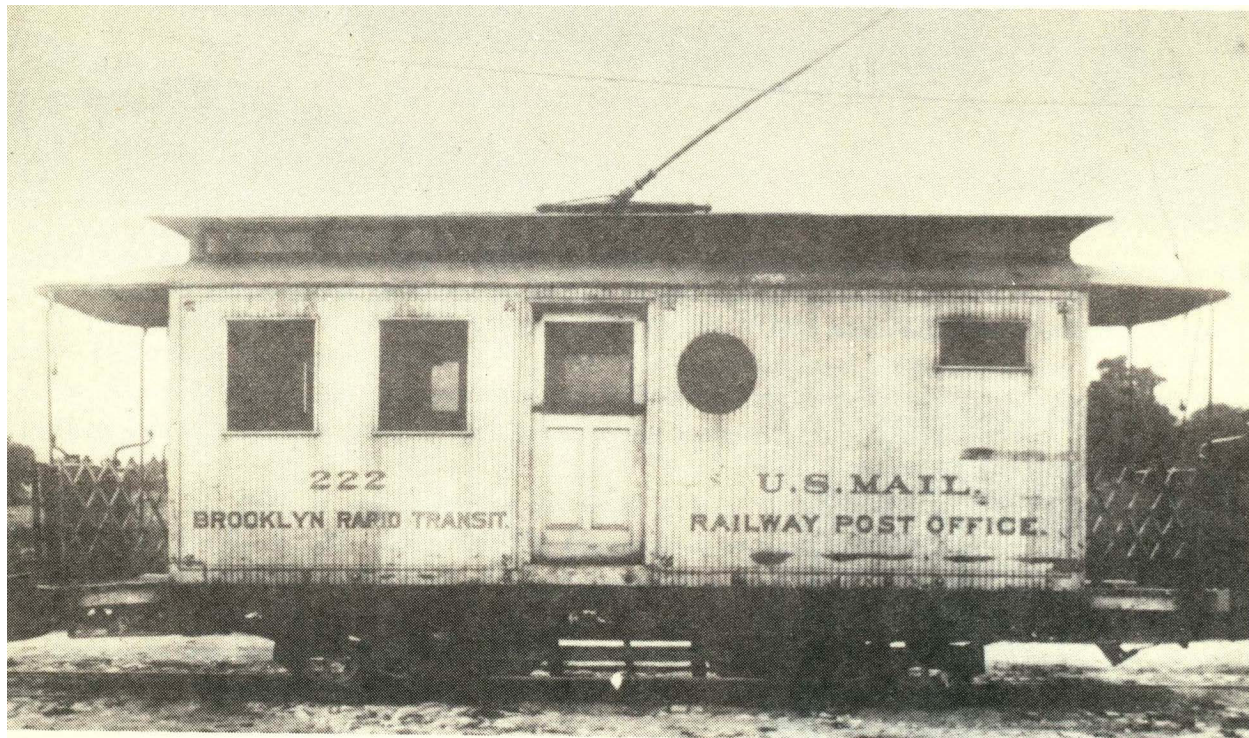
Price 1979

A question for folks that know more than me. I would have thought there would be some sort of marking to indicate that this postcard traveled via ship, but I did not find anything. Here is how I think the postcard traveled. It came in by ship in June 1906, to Brooklyn (maybe), and then was transferred to the Brooklyn General Post Office. It received a circular date ("Arrival" ?) cancel of June 30, 1906, and went onto a streetcar (to the carrier that delivered mail to Powell Street).

I have not been able to figure out why Portland, Oregon was added to the address line. Also, I did a search for Violet Ingelfield and only came up with a Violet Englefield; a British actress and singer known for her musical theatre performances in London's West End and on Broadway in the first two decades of the 20th century. Unfortunately, in 1906 she was acting in London, in the play *The Girl Behind the Counter*, and so, would not have been receiving mail in Brooklyn, NY.

Equally unfortunate is the fact that the text, "Dear Vi , Just a card to let you know that I am still at home. Ernest Rio..." (handwritten below a view of the 'The Crystal Palace, London' on the illustrated reverse side of the card) gives no further information as to Violet Ingelfield's identity.

But, before we end, for those who are unfamiliar with R.P.O. streetcars, below is a picture of Mail Car #222 of the Brooklyn Rapid Transit Co. taken in 1905. Note the pantograph extending above the car. Almost all R.P.O. streetcars were self-contained electric powered vehicles deriving their electricity from overhead wires.



Price 1979

References:

- Baughner, Dan. 2010. Three times the fun!! Perfin cover - street car R.P.O. cancel - flag cancel. *The Perfins Bulletin* 64:68-69.
- Gault, Roy. 2022. Great British postage stamps known with perfins. Great Britain: The Perfins Society: H-226
- Hendren, Gary. 2010. St. Louis street car cancel with perfin. *The Perfins Bulletin* 66:18-19.
- Price, John M. 1979. Street car R.P.O. service in Brooklyn and New York City. Omaha, NE: Mobile Post Office Society. 48 p.

A Perfin Treasure Hunt

Tom Unterberger (#1194)

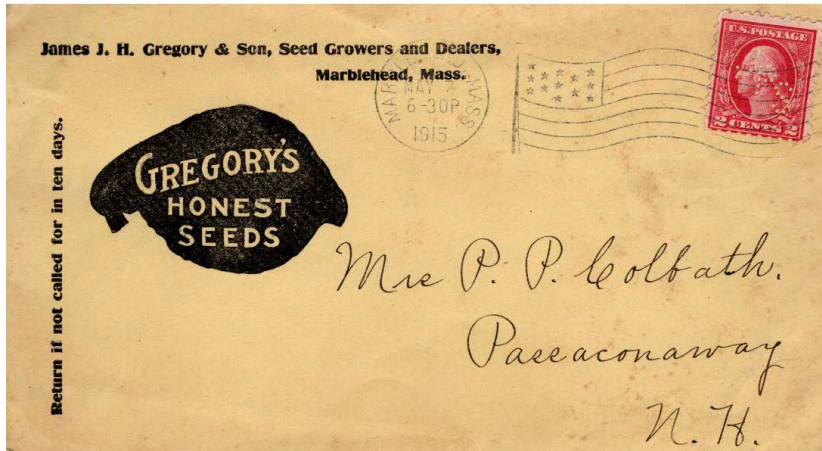
One of the fellows in my monthly poker game is a part-time coin dealer/appraiser, and as such he occasionally comes across stamp collections. I asked him to keep his eye out for perfins for me- you never know! He called me the other day and handed me a box filled with US commons bundled with thread - hundreds of bundles. Nothing had been added to this accumulation since 1956. The owner had worked in a bank, so I assume these stamps came from older bank correspondence.

They ranged from the 1902 regular series to the 1938 Prexies. I dug in, and many (!) hours later, amassed quite a pile of patterns new to my collection. The final tally of better patterns included: A: 3 (1 pattern), B+: 2(2 diff. patterns), B: 20 (5 diff.), C+: 7 (2 diff.), C: 29 (14 diff.) The only downside for me was picturing what this collection could have been BEFORE everything was soaked - all the patterns that could have been identified and tied to a corner card!

Newly Discovered Supplemental User of Pattern J127.5 (JPS)

Edited from notes submitted by Dan Baugher (#3825)

I recently found a cover at a local stamp show which adds a supplemental user to the information currently listed in the *US Catalog* (Endicott 2022). The cover shown immediately below is franked with a 2¢ red Washington with a diagonal "JPS" perfin, the corner card of Gregory's Honest Seeds, and the return address of James J. H. Gregory & Son, Seed Growers of Marblehead, Mass.



Pattern J127.5

So, what's wrong with this picture. Simply, this - the perfin JPS (pattern J127.5) is attributed to John P. Squire & Company of Boston, MA and is annotated in the catalog with an asterisk indicating that the identification is confirmed by a cover with corner card identification. John P. Squire & Company fits the JPS pattern far better than does J. J. H. Gregory & Son or Gregory's Honest Seeds. The two companies were located about 16 miles apart but is there any demonstrable relationship between the two?

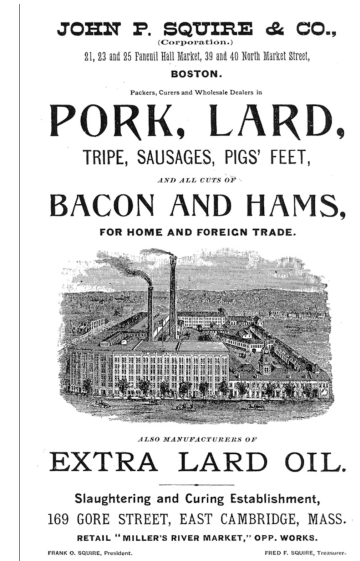
John P. Squire & Company
(History extracted from Dornbusch 2012)

John P. Squire & Francis Russell formed the partnership of Russell & Squire in April of 1842. The partnership, primarily involved in provisions, lasted only five years at which time Squire assumed sole control of the company. In 1850 he formed a new partnership with his sister's husband, Hiland Lockwood, and Edward D. Kimball. At this time, he expanded into the killing and dressing of hogs for the Boston market. For this purpose, he purchased land along Miller's River in East Cambridge and built a small slaughterhouse. In its first year he killed about one hog per day.

Partnership changes began in 1866 and by 1884 the partnership had become John P. Squire, President, and his two sons, Frank O. Squire, Vice President, and Fred F. Squire, Treasurer.

Growth of the company necessitated year-round slaughtering of hogs, which in turn necessitated refrigeration to maintain a storage temperature of thirty-eight degrees. Thus in 1881 Squire constructed a large refrigerator building which held about 30,000 tons of ice. He routinely hired hundreds of men during the winter months to harvest ice for the summer months. An 1891 fire allowed the rebuild to include a modern system of refrigeration. He also significantly expanded the capacity of the factory, which allowed 12,000 hogs to be refrigerated at a time. By the early 1900s his facilities covered almost 20 acres, with seven acres being dedicated to refrigeration. The plant at this point was capable of killing & processing 6,000 hogs a day. At its height, Squire employed more than 1,500 workers (including 1 woman and 15 girls). He also had branch factories across the Commonwealth of Massachusetts.

Sometime during the mid-1930s the company was acquired by Swift & Co. of Chicago and was continued operations until the 1950s. The abandoned factory was destroyed by fire in 1963.



James J. H. Gregory & Son

In 1854, at the age of 26 Gregory started his business. James J. H. Gregory & Son began its operations from his home. His first seed was received from a neighbor and Hubbard squash was named for her. He is also credited with developing the first cherry tomato, was a key distributor of the Danvers onion, and developed several other vegetable and plant varieties. Through his company he became one of the leading seed sellers in the U. S.



He was innovative, using illustrated paper envelopes which showed examples of the plants to package and transport seed, and using seed catalogs as a merchandising tool.

Gregory authored practical guides on vegetable gardening, providing detailed instructions for growing and marketing crops. He also wrote for horticultural journals.

He was politically active, as a member of the Marblehead, MA Board of Selectmen and later as a Massachusetts State Senator.

He retired to a life of philanthropy in 1907 and died in 1910.

So, now I repeat the question raised at the beginning of this note - is there any demonstrable relationship between the two. And the answer is - not really. It is fairly clear that there is no vocational relationship between these two companies,

but it is easy to postulate (without any evidence whatsoever) that an employee of Gregory's had correspondence with a representative of Squires which entailed return postage being included in the correspondence from Squires to Gregory's. Any other suggestions??

References:

- Dornbusch, Erin. 2012. John P. Squire. Industry in Cambridge website. Accessed at: <https://historycambridge.org/industry/jpsquir.html>. Accessed on: 17 Jan 2026.
- Endicott, Stephen. 2021. Catalog of United States perfins. A catalog of perfins in United States postage 1908-2018. USA: The Perfins Club:J-15.
- Worrell, Shari Kelley; Flude, Norma Lovett Gregory Kelley. 1998-2024. James J. H. Gregory; a timeline of his life. Victory Horticultural Library website. Accessed at: <https://www.saveseeds.org/biography/gregory/>. Accessed on: 30 Nov 2025.

Prohibition and Revenue Perfins

Paul Mistretta (LM#111)

Last July I was successful in recovering eleven boxes containing Chuck Spaulding's (#2355 deceased) stock cards (annotated by Art Mongan (#3443L deceased)). These cards, which apparently formed the basis of the information in his work sheets, have proven to be a treasure trove of information related to the creation of the 2010 *Catalog* which was ultimately edited by Art. The back side of these GK107-BK stock cards are annotated with the basic information related to the stamp(s) which (presumably) were in the acetate pocket on the face of the card. Also found in the pockets were images of patterns or stamps with the revperf being described, and additional notes made by Chuck, Art, or other contributors of relevant information. (Unfortunately for me not many stamps remained in the pockets).

I have begun creating a spreadsheet of the data to make it more useful in checking the information which was ultimately published by Art. While I am currently working through Box 6 of 11, I have completed the boxes which contained the information related to Beer revenues with perforated cancels in them.

The cards for these revperfs follow a basic pattern as shown in Fig. 1.

Some clarification about the information is needed. In Row 3 the reported time of facility operation is often of greater duration than that of perforator use. In the first card (top of next page), the partially canceled out 1878 is the year of original operation of the Brewery, while "93" below it is the year in which Bartels acquired it (1893) and began operating the facility.

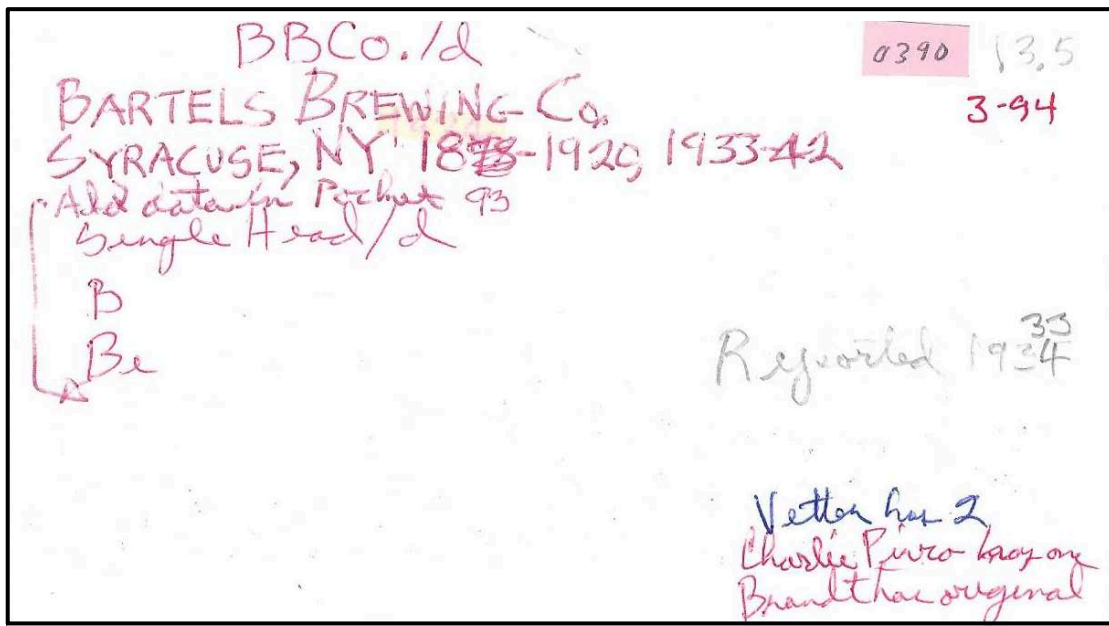


Figure 1: Typical card from the stock of cards created by Chuck Spaulding as modified by Art Mongan. Data contained includes, beginning at the top: Row 1 alpha-numeric pattern description, Mongan's catalog number (add-on piece of a sticky note), Spaulding's working catalog number; Row 2 - Name of the Primary user of the pattern, and at the right a number indicating which I assigned which indicates the location of the card (in this case the 94th card in Box 3); Row 3 - City, state and time of operation of the facility; Row 4 - A note indicating that there is additional data in the pocket of the card; Row 5 - a description of the perforator head; Row 6 - a reflection of the commonness of the pattern; Row 7 - Type(s) of stamps in which the pattern is found and at the right the actual dates of use of the items reported; Row 8 + - Collectors reporting owning this pattern.

Also present on many cards is information related to the pattern itself which might be used to distinguish it from very similar patterns, cross reference to similar patterns, notes suggesting further actions needed regarding the pattern being described, or other relevant information.

Turning to the pocket side of the card, as noted above there was generally some addition of data, often cutouts from Spaulding's worksheets produced in the early 1990s plus images of the patterns or images of stamps with the patterns. An example of an extract from Spaulding's worksheets is presented as Figure 2.

B13.5	✓BBCo./d	d=1933,34	Be
	Bartels Brewing Co. Syracuse, NY 1878-1920, 1933-42		
	93		
	John Greenway 1878-84		
	Mantel & Haas 1884-86		
	Germania Brewing Co. 1886-93		
	Bartels Brewing Co. 1893-1920, 1933-42		

Figure 2: Extract from Chuck Spaulding's early 1990s worksheets. Note that the top 3 lines repeat data found on the back side of the card (not always identical), with, below that recap, historical information related to the facility in which the perforator was used. Note in the example above there were three owners of the facility prior to Bartels.

In many of the cards the printed extract was not present but was replaced by a handwritten note relating similar information. These notes were compiled by Kurt Ottenheimer (LM86 deceased) as confirmed by his son Daniel (#4171). Physically they take the same format as Figure 2 (see Figure 3).

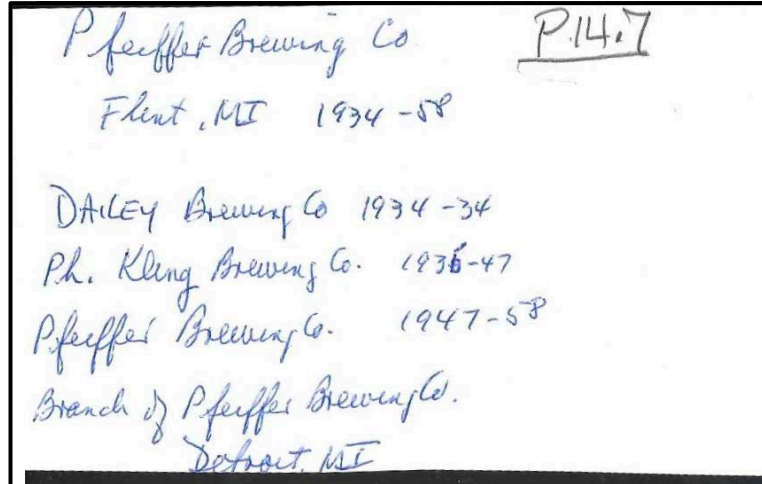


Figure 3: Typical handwritten facility history developed by Kurt Ottenheimer

Despite the massive amount of work which had been done on the histories, the information did not make it into the final catalog prepared by Art, It was these histories which, led me to the research which is presented below. Specifically, it was the chronologies presented in them which aroused my curiosity.

In Figure 2 you will note that Bartels operated their Brewing Company from 1893-1920 and then from 1933-42. So, what about 1920-1933.

Even a weak student of American history will recognize the gap - 1920-1933 as the era of Prohibition. Often referred to as "The Roaring Twenties", this was the time frame in U.S. history when the 18th Amendment to our Constitution (enacted on Jan 16, 1919) prohibited the manufacture, importation, sale, and transport of alcohol (with very few exceptions to the law). Enabling legislation, The Volstead Act (enacted on Oct 19, 1919) set down the rules for enforcing the Federal ban and defined the types of alcoholic beverages that were prohibited. The Act was implemented on January 16, 1920, the beginning of the beginning year of most of the gaps in the chronologies of facility ownerships. So, we have an explanation for the closure dates of 1920 for many of the breweries.

An obvious exception to this 1920 shuttering was those companies which managed to shift to alcohol free "malt beverages" or products completely unrelated to beer. Medical alcohol in the form of whiskey was permitted to be prescribed, restricted to one pint of spirits every ten days. Pastors, priests, ministers, rabbis and others who practiced religious actions could acquire a permit to provide alcohol for sacramental purposes only. Alcohol for any industrial purposes was allowed in Title III of the Volstead Act (Anon. [2025]). Thus, some facilities continued producing alcohol for those uses. It should be noted that medicinal use (and the prescriptions needed to document it) skyrocketed during this era; Physicians wrote an estimated 11 million prescriptions *a year* throughout the 1920s (Anon. 2026). For more on this subject see Matt Stephenson's article "Prohibition - a Philatelic Discussion" (*The Perfins Bulletin* 73:76-79).

Returning to the histories of the facilities which used revperfs as documented on these cards I noticed many dates of facility closure which predated 1920. The dates which commonly appeared were 1918 and 1919 although there were others. So, the question which immediately came to mind was - were there States which had enacted statewide prohibition laws in advance of the Federal law. I don't remember learning this in my High School American History class. I guess it wasn't something the County Board of Education felt important to teach to us impressionable youngsters.

It took almost no research at all to locate a listing (and a progressively shading map) of the dates when Federal prohibition became the law in each of the 48 states. The list surprised me. Remembering that the law was enacted on January 16 ,1919, states had begun ratifying the Constitutional Amendment as early as January 8, 1918.

Mississippi was the first State to ratify the Amendment on January 18, 1918. It was followed in 1918 by:

January: Virginia,	February: Maryland	April: Massachusetts
Kentucky,	Montana	May: Arizona
North Dakota	March: Texas	June: Georgia
South Carolina	Delaware	August: Louisiana
	South Dakota	November: Florida

By the end of 2019, forty-five additional states had joined the stampede to prohibit general access to alcohol. New Jersey didn't ratify the Amendment until March of 1922 and both Rhode Island and Connecticut rejected it (Brown 2021). But that doesn't tell the whole story.

It turns out that thirty-seven states were "dry" even prior to the enactment of the 18th amendment.

In 1851 Maine became the first State to enact prohibition of beer (Anon. 2025a). They repealed that prohibition in 1856 but reimposed it from 1858 to 1934. Then followed:

<u>1853-1902: Vermont</u>	<u>-1934: South Carolina</u>	Michigan
<u>1880-1937: Kansas -</u>	<u>-1936: Alabama</u>	New Mexico
<u>1882-1894 & 1916 to 1934: Iowa</u>	1916-1933: Arkansas	<u>Texas</u>
<u>1889-1933: North Dakota</u>	<u>-1933: Oregon</u>	-1934: Montana
<u>-1896 & 1916-1933: S. Dakota</u>	-1934: Idaho	<u>Utah</u>
<u>1907-1933: Oklahoma</u>	Washington	<u>-1935: New Hampshire</u>
<u>1908-1934: Mississippi</u>	<u>Virginia</u>	<u>1919-1933: Ohio</u>
<u>-1938: Georgia</u>	<u>-1938: Colorado</u>	-1934: Florida
<u>1909-1935: North Carolina</u>	<u>1917-1934: Nebraska</u>	Kentucky
<u>-1939: Tennessee</u>	1918-1933: Alaska	<u>Wyoming</u>
<u>1914-1934: West Virginia</u>	Nevada	
<u>1915-1933: Arizona</u>	Indiana	

Thus, there are quite a few states for which the year of closure for breweries occurred well prior to the imposition of Federal Prohibition.

However, it would appear from the preponderance of 1920 closure dates that most of those breweries which were still in production in 1920 waited right up to the last minute to shut down operation. Prohibition caused the shutdown of over 200 distilleries, a thousand breweries, and over 170,000 liquor stores (Anon. 2026). While the law may have contributed to better health (lower rates of cirrhosis of the liver, fewer cases of spousal abuse, fewer commitments for alcohol abuse, etc.), the highest homicide rate in the United States in the first half of the 20th century occurred during the years of prohibition and decreased immediately after prohibition ended (Anon. 2026).

Production of beer resumed prior to (in preparation for) the repeal of the 18th amendment by the 21st amendment. Thus, we see resumption of production dates of 1932 and 1933.



Figure 4: Maine's first beer revenue stamp - issued in 1933 after both Federal and State prohibition laws were repealed. (image size reduced)

Subject to the time constraints reported above beer tax was imposed by the states in a variety of categories (Beer, Exported Beer, Imported Beer, Beer not over 4%, Beer (3.2%) Barrels, Beer & Wine, Beer bottle labels, etc.) by various State alcohol control agencies often referred to as ABCs (Alcohol Beverage Commissions). The list of States in whose revenue stamps revperfs are known is a very short list (Wrisley 2013) including only:

Alabama	Illinois	Missouri	North Carolina	Virginia	Wisconsin
Georgia	Indiana	Nebraska	Pennsylvania	Washington	
Idaho	Michigan	New Mexico	South Dakota	West Virginia	

The use of Federal Beer Revenue stamps began in 1866, and their use was (officially) terminated in 1954, although later dates of use are reported. All Federal beer stamp types from 1901 (and a few from the 1898 Series) are known with dated perforated cancels (Mongan 2010). They are reported as having been used in most of the fifty States (actually, forty-eight States since Alaska and Hawaii had not been admitted to the Union in 1954).

And one final note on Prohibition. In 1966, the State of Mississippi was the last State to repeal its statewide prohibition of the sale of alcoholic beverages. Even so this was not the death knell for prohibition - several States still allow local option (by county, city, town or other political unit) prohibition statutes to be enacted and enforced. I can speak from experience that both North Carolina and Arkansas had 'dry' areas as recently as 2012, the year I retired and ceased travelling extensively. The trend, currently, is for local referenda to loosen these restrictions, but some do still exist - 90 years after the end of Federally the imposed drought.

Hopefully I have managed to convey some of the legal complexity related to Prohibition which led to gaps in the use of revenue stamps to document payment of beer tax by breweries.

P.S. The stock cards referenced in this article are now in Bellefonte, PA in the American Philatelic Research Library as a Club Donation. I don't know what their availability will be should anyone be interested, contact information for the Library is available under "Club Library" on page 22 of this *Bulletin*.

Secretary's Report

Converted to Life

Membership:

LM3906 George Miura

Dropped for non-payment:

#4178 Edward Baud

#4359 Thomas Boxell

#4169 Greg Crawford

Dropped (Cont.)

#4341 William Duncan

#4360 Alicia Garner

#4332 Bill Goetz

#4293 Chris Granger

#4362 Daniel Kendall

#4135 Paul Kurtz

#4181 David Lenze

#4354 Roy Litts

Dropped (Cont.)

#3969 Lester Meltzer

#1657 William Morrison

#4276 Terry Pavey

#4088 Paul Robertson

#4337 Susan Schnell

#4349 Austin Toth

#4339 Jennifer Walker

#3838 James Weiland

#4151 John Weiss

Current membership: 340

P.P.S. Federal Beer Revenues are well documented in the *Scott's U. S. Specialized Catalogue*, but for those in the Club unfamiliar with State issued Revenue Stamps below is a selection of them (sorted by size [height] and without "Figure # " notations) in which reverps have been reported.



Alabama 1937
72 x 16 mm



Virginia 1938
124x24 mm



North Carolina 1958
95x25 mm



New Mexico 1942
24x31 mm decal



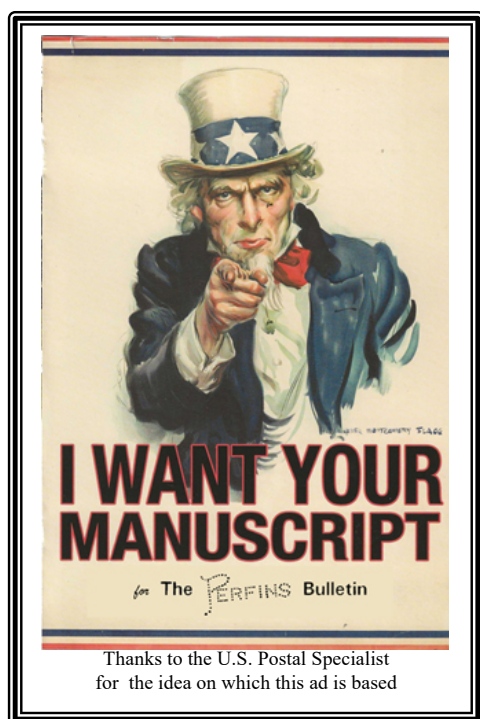
Illinois 1934
101-103x34 mm



Nebraska 1936
123x34 mm



Wisconsin 1933
136x35 mm



**NOT MUCH IN THE
QUEUE FOR THE
NEXT ISSUE**

At present I have only
1.2 pages of copy for
the next issue

Got an idea, but don't
trust your writing - send
me an email & I'll work
with you to get it
researched and written.

Or, even better for me -
write a note for
publication.

This is your *Bulletin* -
don't let it starve!

**INVESTIGATE
PRECANCELS!**

Thousands of possibilities at
minimal cost!

Local and National meetings held
throughout the year

Monthly magazine

Send \$1.00
(includes postage)
for sample copy to:

**Promotional Secretary
Precancel Stamp Society**
Frank Bird
1095 Pinellas Point Dr. S #352
Saint Petersburg, FL 33705-6377
Promo@precancels.com

The Perfins Bulletin
14888 Oceanview Dr.
Brookings, OR 97415-9326

Continued from Pg. 39



Michigan 1933
95x36 mm



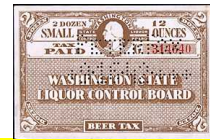
Indiana 1955
45x89 mm



South Dakota 1941-49
122x33 mm



West Virginia 1961
57x146 mm



Washington 1933-53
~95.5x61 mm

References:

Anon. 2025a. Dry state. Wikipedia. Accessed at: https://en.wikipedia.org/w/index.php?title=Dry_state&oldid=1308297234. Accessed on 26 Jan 2026.

Anon. 2026. Prohibition in the United States. Wikipedia. Accessed at: https://en.wikipedia.org/wiki/Prohibition_in_the_United_States. Accessed on: 26 Jan 2026.

Anon. [2025b.] Volstead Act. Accessed at: https://en.wikipedia.org/wiki/Volstead_Act. Accessed on 27 Jan 2026.

Brown, Katie. 2021. When each state went sober: Mapping prohibition ratification by state [map]. New York, NY: Vine Pair Inc. Accessed at: <https://vinepair.com/articles/prohibition-ratification-state-map/>. Accessed on 26 Jan 2026.

Mongan, Arthur J., ed. 2010. U.S. Revs.-Perfins 2010 edition: A Handbook of Perforated or Punched Initials, Numbers and/or Designs in United States Revenues and Fiscal Documents. Volume 2. Commodities Revenues. USA: The Perfins Club. 436 p.

Stephenson, Matt. 2019. Prohibition - a philatelic discussion. *The Perfins Bulletin* 73:76-79).

Wrisley, Dave, ed. 2013. The State Revenue Catalog. Lincroft, NJ: The State Revenue Society. 733 p.

Upcoming Events

March 18-20, 2026 - California Spring Roundup: Paso Robles, CA - 2165 Buena Vista Drive - (reservations 1-805-239-3004). Bourse hours: Wednesday & Thursday 7 a.m.-11 p.m. and Friday 8 a.m. - 2 p.m. Parking is free. Questions? Contact Tim Hebel (karehebel@sbcg1bal.net).

June 5-6, 2026 - The Missouri Precancel Club Mulefest: Bridgeton, MO - Arlington United Methodist Church, 3770 McKelvey Rd. Bourse hours: Friday 9 am-10 pm, Saturday 8 am - 3 pm. Questions: Contact T.G. Rehkop (tgrehkop@marz.com).

August 3-8, 2026 - 105th PSS / 83rd Perfins Club Convention: Madison Marriott West, Middleton, WI, - Convention rate available until July 12, 2026 (request at time of booking) \$135.00/night; parking fee waived - more info as it becomes available.

The Perfins Bulletin is published bi-monthly.

Postmaster: Please send address changes to The Perfins Club, Inc., 14888 Oceanview Dr., Brookings, OR 97415-9326